

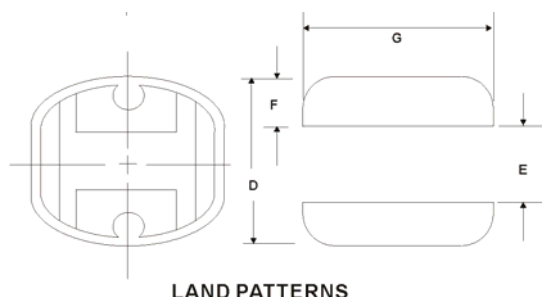
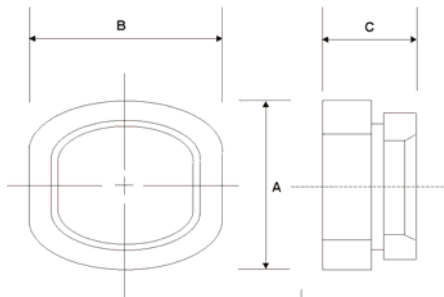
PST SERIES

Features



- Magnetically shielded
- Surface mounting type.
- High mounting stability.
- Electrode terminal.
- Comparatively large rated current and high inductance.
- Use high performance ferrite core.
- Density design, small size, low cost.
- Low radiation.

Dimensions

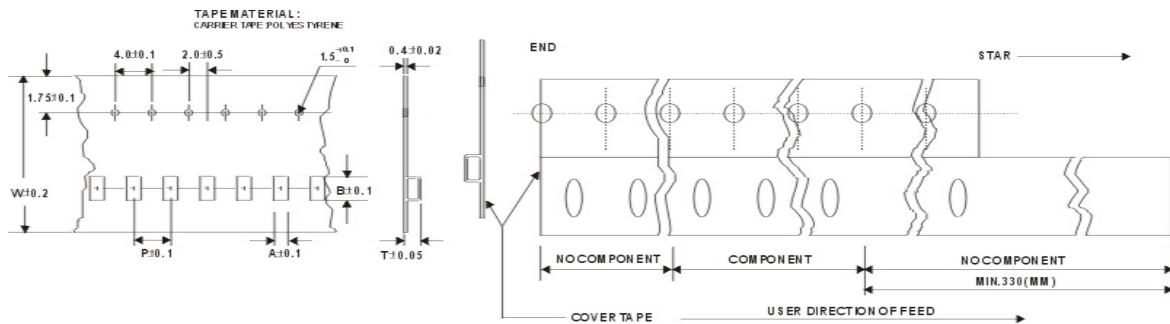


LAND PATTERNS

DIM:mm

Type	A	B	C	D	E	F	G
PST63	6.2±0.3	5.6±0.3	3.2±0.3	6.20	1.7	2.25	5.5
PST74	7.8±0.35	7.0±0.35	4.5±0.4	7.80	2.0	4.00	7.5
PST105	10.0±0.4	9.0±0.4	5.0±0.5	10.0	2.5	5.00	9.5
PST125	12.5±0.5	11.6±0.5	5.4±0.5	12.5	2.5	5.00	9.5

Packaging



DIM:mm

Type	A	B	W	P	T	Chips/Reel
PST63	5.8	6.4	12	12	3.5	1000
PST74	7.3	8.1	16	12	4.8	500
PST105	9.5	10.5	24	16	5.9	500
PST125	12.0	13.0	24	16	5.8	500

PST SERIES

Part Number	L (uH)	Test Freq. (KHz)	RDC(ohm MAX)				IDC(A MAX)			
			PST63	PST74	PST105	PST125	PST63	PST74	PST105	PST125
100	10	100	0.14	0.07	0.06	0.05	1.00	1.65	2.06	2.65
120	12	100	0.16	0.07	0.07	0.05	0.94	1.57	1.94	2.50
150	15	100	0.18	0.08	0.07	0.06	0.86	1.39	1.72	2.45
180	18	100	0.25	0.10	0.08	0.06	0.78	1.29	1.58	2.40
220	22	100	0.32	0.13	0.08	0.07	0.76	1.12	1.42	2.20
270	27	100	0.36	0.16	0.10	0.08	0.64	1.06	1.32	2.00
330	33	100	0.41	0.18	0.11	0.10	0.61	0.97	1.16	1.80
390	39	100	0.47	0.18	0.12	0.11	0.53	0.91	1.10	1.65
470	47	100	0.51	0.27	0.14	0.12	0.50	0.80	1.00	1.50
560	56	100	0.72	0.29	0.19	0.15	0.46	0.76	0.93	1.38
680	68	100	0.82	0.33	0.21	0.17	0.42	0.68	0.85	1.26
820	82	100		0.43	0.28	0.20		0.62	0.79	1.14
101	100	1		0.49	0.34	0.25		0.55	0.72	1.05
121	120	1		0.68	0.37	0.28		0.49	0.63	0.95
151	150	1		0.94	0.51	0.40		0.44	0.55	0.85
181	180	1		1.00	0.57	0.48		0.40	0.50	0.77
221	220	1		1.18	0.78	0.52		0.36	0.47	0.70
271	270	1		1.30	0.87	0.70		0.33	0.41	0.63
331	330	1			1.20	0.80			0.37	0.57
391	390	1			1.34	1.08			0.35	0.52
471	470	1			1.50	1.20			0.33	0.48
561	560	1				1.34				0.44
681	680	1				1.78				0.40
821	820	1				2.00				0.36

Tolerance of inductance:

PST 63 :10~27uH±20%(M), 33uH~68uH±15%(L).

PST 74 :10~27uH±20%(M), 33uH~82uH±15%(L), 100~270uH±10%(K).

PST105:10~27uH±20%(M), 33uH~82uH±15%(L), 100~470uH±10%(K).

PST125: ±20%(M)

The operating temperature range is -25 to +85 .

IDC:The current of inductance drop 10%.